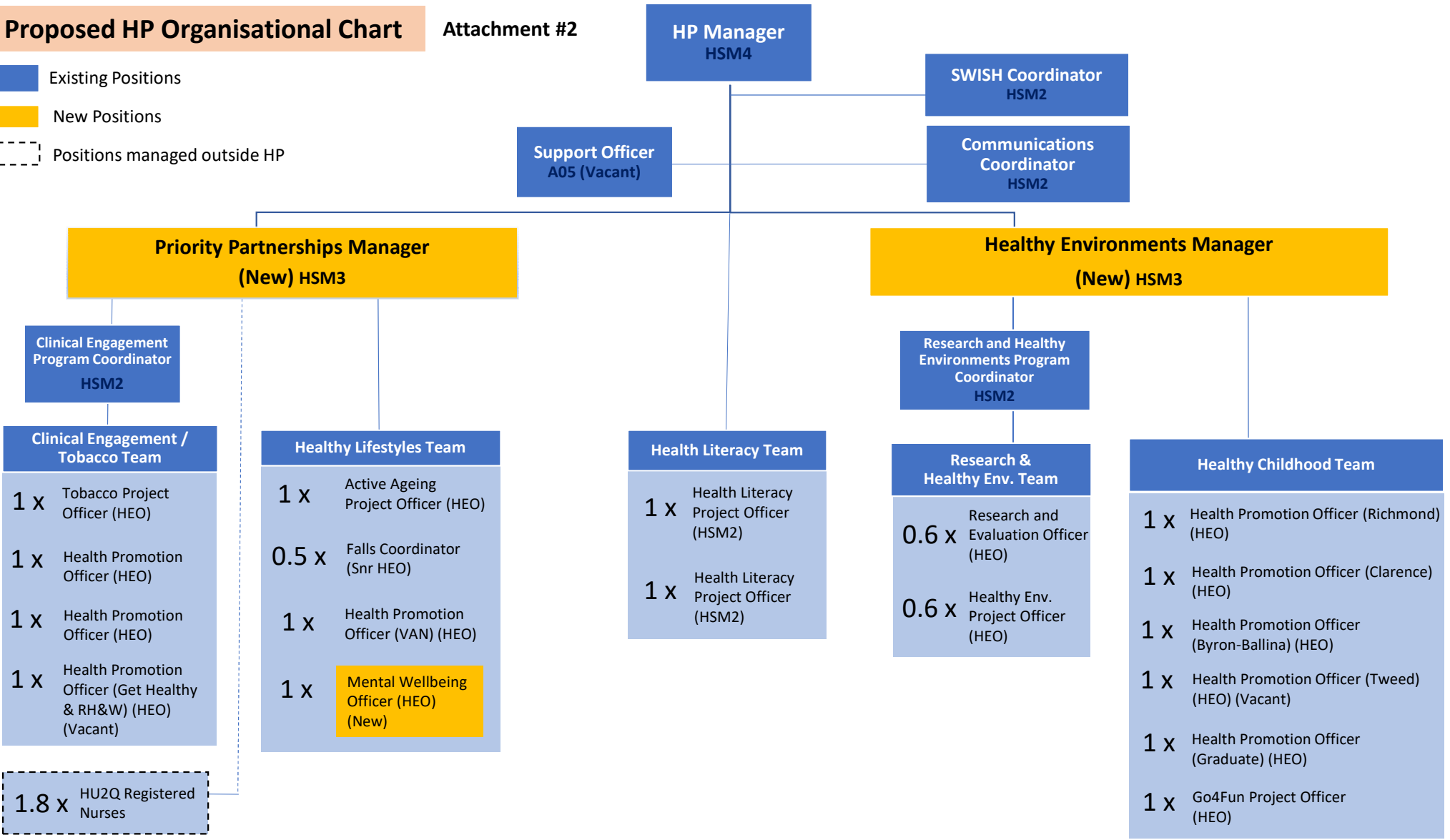


# Proposed HP Organisational Chart

Attachment #2

- Existing Positions
- New Positions
- Positions managed outside HP



**HP Manager**  
HSM4

**SWISH Coordinator**  
HSM2

**Support Officer**  
A05 (Vacant)

**Communications Coordinator**  
HSM2

**Priority Partnerships Manager (New)**  
HSM3

**Healthy Environments Manager (New)**  
HSM3

**Clinical Engagement Program Coordinator**  
HSM2

**Research and Healthy Environments Program Coordinator**  
HSM2

**Clinical Engagement / Tobacco Team**

**Healthy Lifestyles Team**

**Health Literacy Team**

**Research & Healthy Env. Team**

**Healthy Childhood Team**

- 1 x Tobacco Project Officer (HEO)
- 1 x Health Promotion Officer (HEO)
- 1 x Health Promotion Officer (HEO)
- 1 x Health Promotion Officer (Get Healthy & RH&W) (HEO) (Vacant)

- 1 x Active Ageing Project Officer (HEO)
- 0.5 x Falls Coordinator (Snr HEO)
- 1 x Health Promotion Officer (VAN) (HEO)
- 1 x **Mental Wellbeing Officer (HEO) (New)**

- 1 x Health Literacy Project Officer (HSM2)
- 1 x Health Literacy Project Officer (HSM2)

- 0.6 x Research and Evaluation Officer (HEO)
- 0.6 x Healthy Env. Project Officer (HEO)

- 1 x Health Promotion Officer (Richmond) (HEO)
- 1 x Health Promotion Officer (Clarence) (HEO)
- 1 x Health Promotion Officer (Byron-Ballina) (HEO)
- 1 x Health Promotion Officer (Tweed) (HEO) (Vacant)
- 1 x Health Promotion Officer (Graduate) (HEO)
- 1 x Go4Fun Project Officer (HEO)

1.8 x HU2Q Registered Nurses