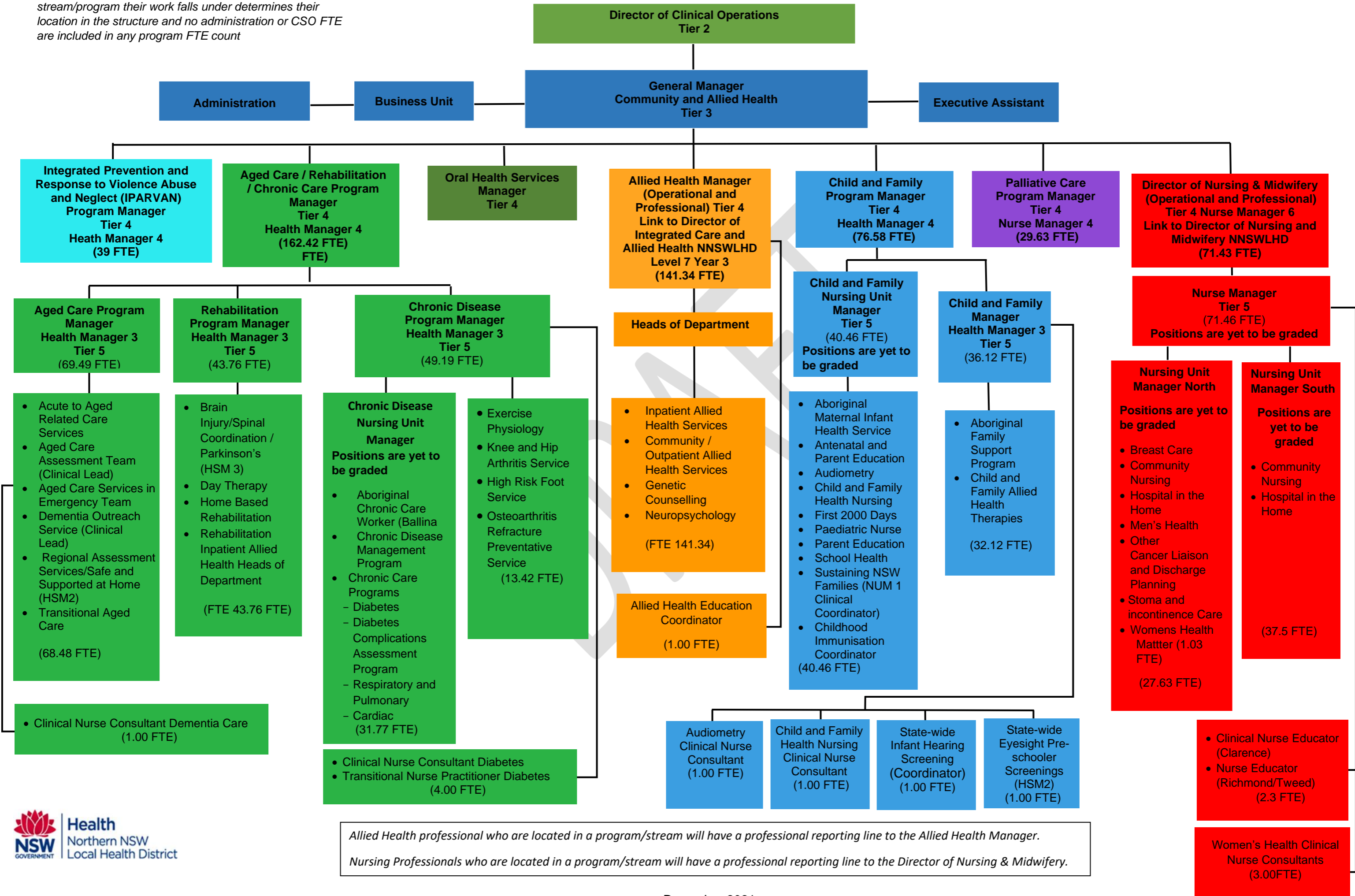


Community and Allied Health Proposed Organisational Structure

If a position is generalist, the higher % of what clinical stream/program their work falls under determines their location in the structure and no administration or CSO FTE are included in any program FTE count



Allied Health professional who are located in a program/stream will have a professional reporting line to the Allied Health Manager.
Nursing Professionals who are located in a program/stream will have a professional reporting line to the Director of Nursing & Midwifery.

