

SWD23/12965



Health
South Western Sydney
Local Health District

Mr Gerard Hayes
Secretary
Health Services Union
Level 2, 109 Pitt Street
Sydney NSW 2000

secretary@hsu.asn.au

Dear Mr Hayes,

I am writing to advise you of proposed changes to the structure of the Cyclotron Unit at Liverpool Hospital, South Western Sydney Local Health District.

In 2022, an external review was conducted which resulted in several recommendations including the restructure of the Cyclotron facility, involving the deletion, creation and modification of existing positions. Although there are currently several vacancies in the Unit, this proposal will directly affect up to three (3) potential HSU members. An organisational chart of the proposed structure is attached.

These changes are anticipated to improve performance and operational sustainability of the Cyclotron Unit to meet current service gaps in NSW and ensure a reliable supply of radiopharmaceuticals by having staff cross trained for both production and QC for FDG and research tracers.

Consultation will occur in accordance with the consultative provisions of the Health Employees' Conditions of Employment (State) Award. To assist in progressing consultation and implementing the proposed changes, a Union Specific Consultative Committee has been convened. The meeting details are as follows:

Date: Wednesday, 22nd February 2023
Time: 10.30am
Location: General Managers Unit, Liverpool Hospital

If you would like to discuss the proposed changes further, please do not hesitate to contact Kirsty Sweeting, Director Human Resources, Liverpool Hospital on 02 8738 8413 or via email Kirsty.Sweeting@health.nsw.gov.au.

Regards

Scott McGrath
A/ General Manager
Liverpool Hospital

Date: 14 February 2023

General Correspondence

Email: swslhd.esu@sswahs.nsw.gov.au

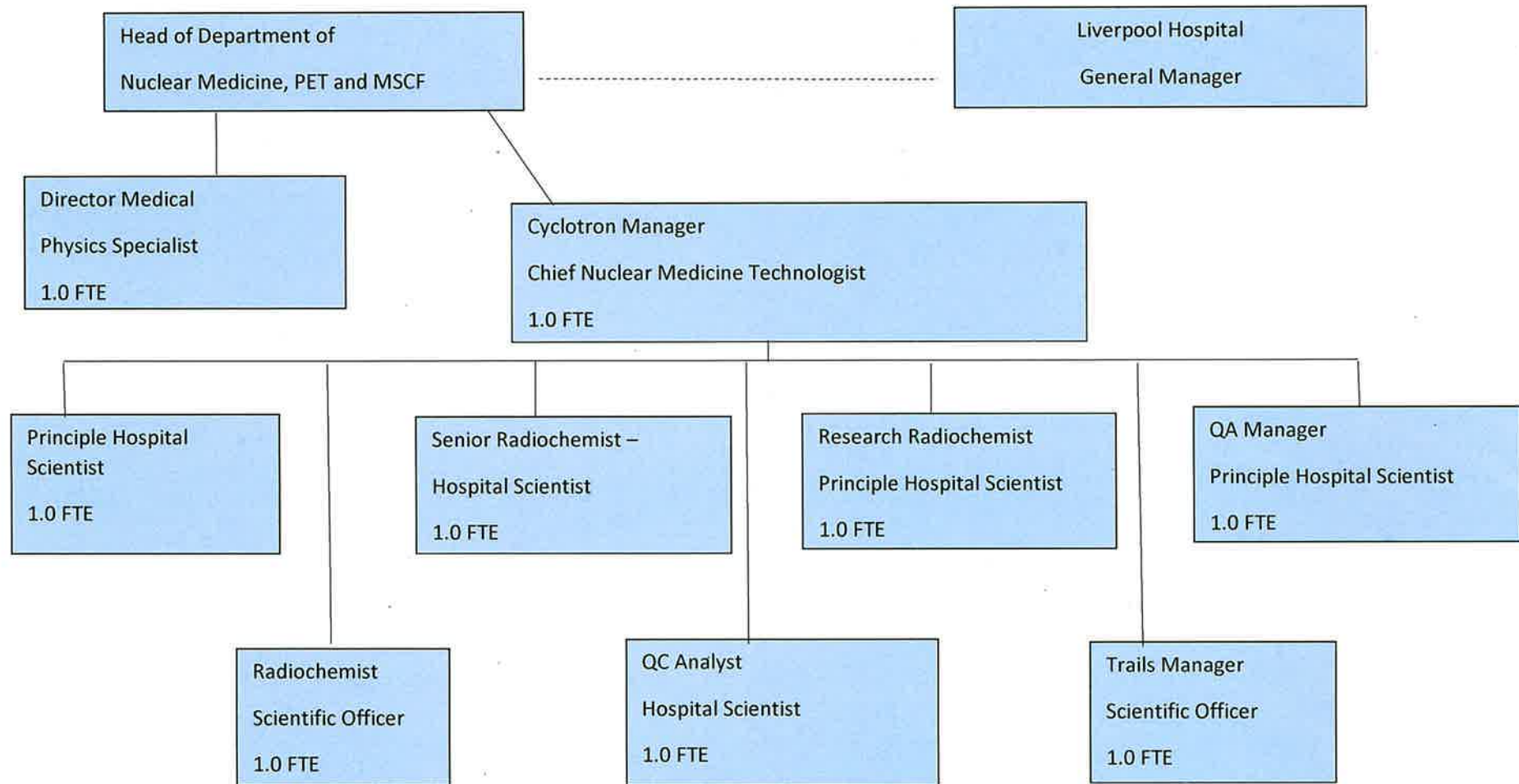
Website: www.health.nsw.gov.au/swslhd/

South Western Sydney Local Health District

ABN 46 738 965 845

Liverpool Hospital Eastern Campus
Locked Bag 7279 Liverpool BC 1871
Tel 612 9828 6000 Fax 612 9828 6001

Cyclotron Organisation Chart – Current



Cyclotron Organisation Chart – Proposed

