

08 April 2022

Mr Gerard Hayes  
Secretary  
Health Services Union  
Locked Bag 3  
Australia Square NSW 1215

Dear Gerard

This letter is to advise NSW Health Pathology Haematology/Transfusion Laboratory, Liverpool are reviewing their structures.

The current structure, has two standalone laboratories of Haematology and Transfusion. Due to numerous resignations from the Haematology department we are piloting the merging of the Transfusion and Haematology Laboratory Manager roles, introducing Senior Hospital Scientist positions and converting a number of Technical Officer positions to Hospital Scientist positions.

The reason for the change is to create more leadership roles and support succession planning in the department.

To date the changes have included:

- Recruitment/conversion of 3 x Full-time Senior Hospital Scientist positions
- Recruitment/conversion of 1 x Full-time Scientific Officer

Changes to be made/trialled:

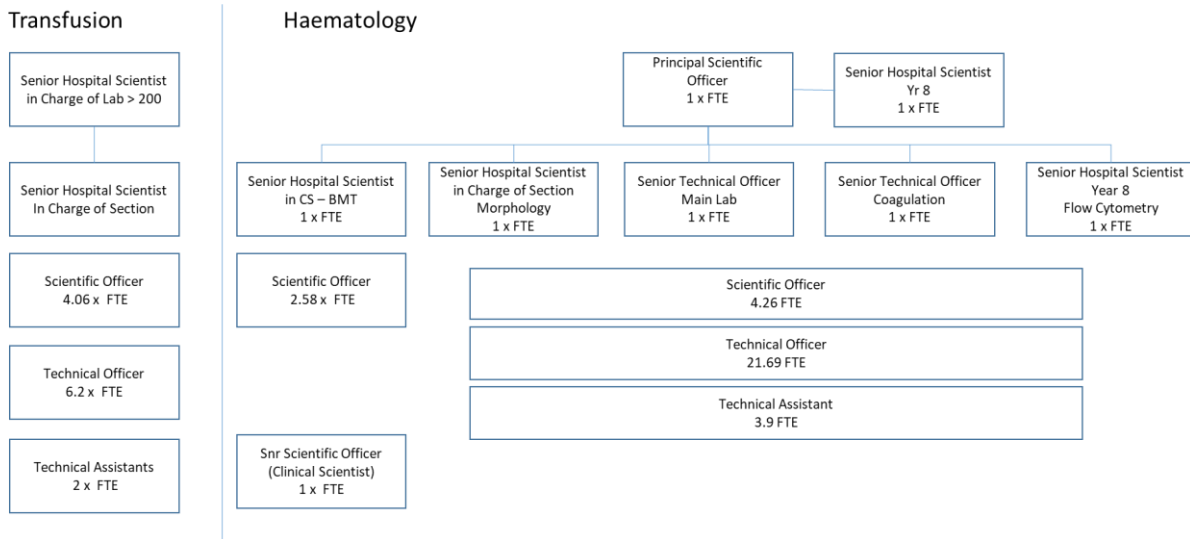
- Senior Hospital Scientist in Charge of Laboratory Transfusion converted to Senior Hospital Scientist in Charge of Laboratory Haematology Transfusion
- Recruitment/Conversion of 2 x Scientific Officers

The below structures outline the current staffing levels and the proposed levels. While these may not be achieved immediately this is what the organization is working towards.

The key benefits to these changes include increased leadership, career progression and succession planning within the two laboratories.

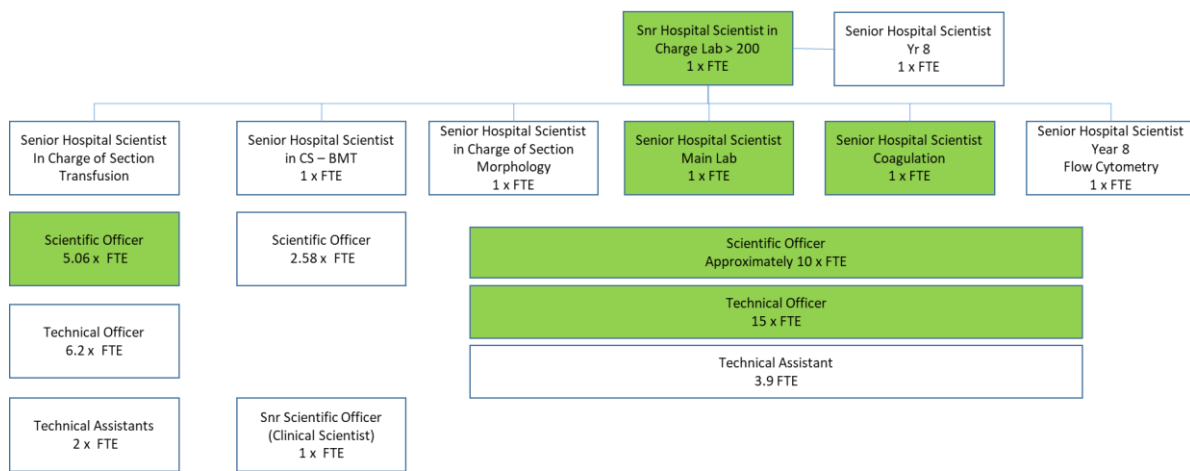
**Current State**

Haematology/ Transfusion Liverpool



**Future State**

Haematology/ Transfusion Liverpool



To date consultation has been occurring with the clinicians within the area and we will now commence consultation with staff.

If you have any queries please feel free to contact me.

Yours sincerely



Siobhan Cunliffe  
**Human Resources Manager**  
NSW Health Pathology East

M: +61 466 912 527

Siobhan.Cunliffe@health.nsw.gov.au  
[www.pathology.health.nsw.gov.au](http://www.pathology.health.nsw.gov.au)

ABN 49 382 586 535