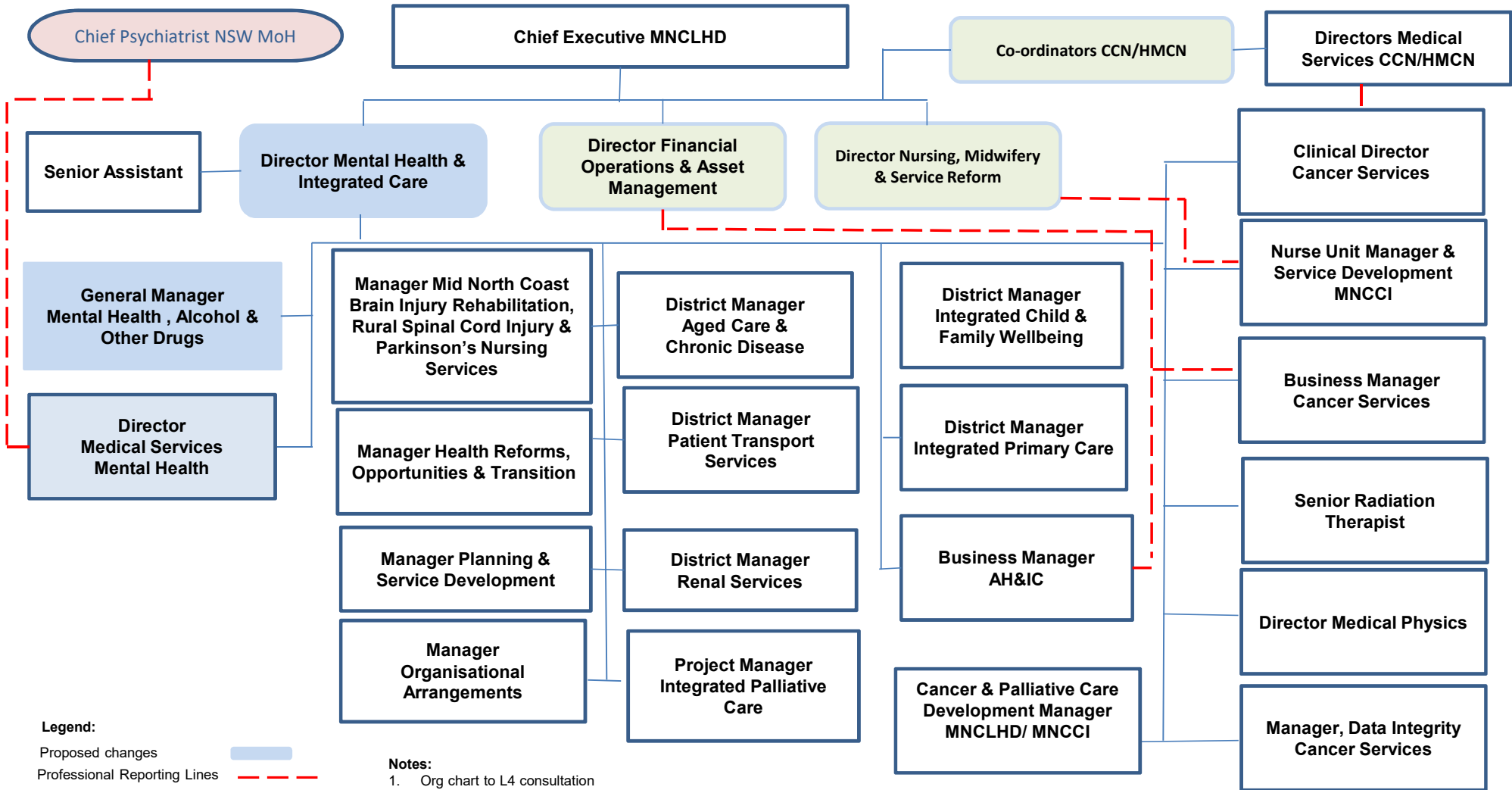


MH&IC Existing Structure to L 4 September 2020



**MNCLHD Senior Executive Team
Proposed Structure September
2020**

MNCLHD L1, 2, 3

MNCLHD Governing Board

Chief Executive MNCLHD

Executive Assistant

Director Public Health

Director Integrated Allied, Community & Cancer Care Services

Co-ordinator Hastings Macleay Clinical Network General Manager, Port Macquarie Health Campus

Co-ordinator Coffs Clinical Network General Manager, Coffs Harbour Health Campus

Director Financial Operations & Asset Management

Director Clinical Governance & Information Services

Director Nursing, Midwifery & Service Reform

Director Integrated Mental Health, Alcohol & Other Drugs

Director Aboriginal Health & Primary Partnerships

Director People & Culture

Director Communications & Corporate Strategy

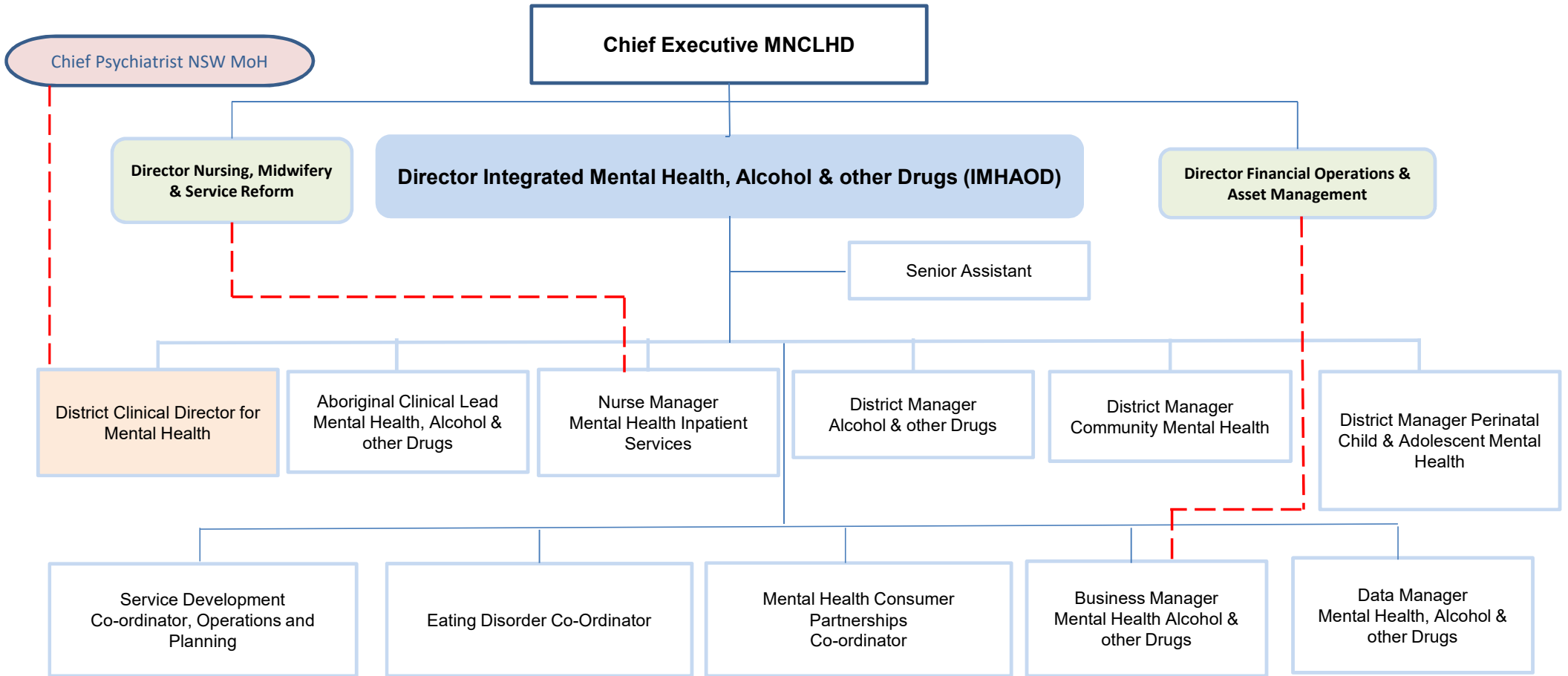
Director Internal Audit, Risk and Compliance

Director Research & Knowledge Translation

Legend:
Proposed New Positions
Held Service for NNSWLHD

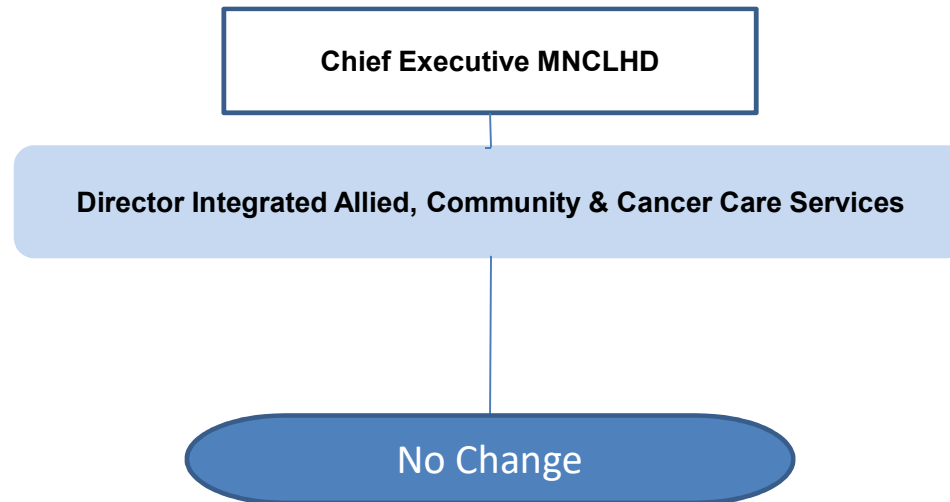
Notes:
1. Org chart to L3 for consultation
2. Proposed SET Structure as at 11/9/2020
3. Changes to reporting lines L4 on next page


MNCLHD L4 IMHAOD reporting lines



Legend: New Position (light blue box), Changed Reporting Line (orange box), Professional Reporting Line (solid blue line), (dashed red line)

MNCLHD L4 ICCSS
Changes in reporting lines



- Legend:**
- New Position 
 - Changed Reporting Line 