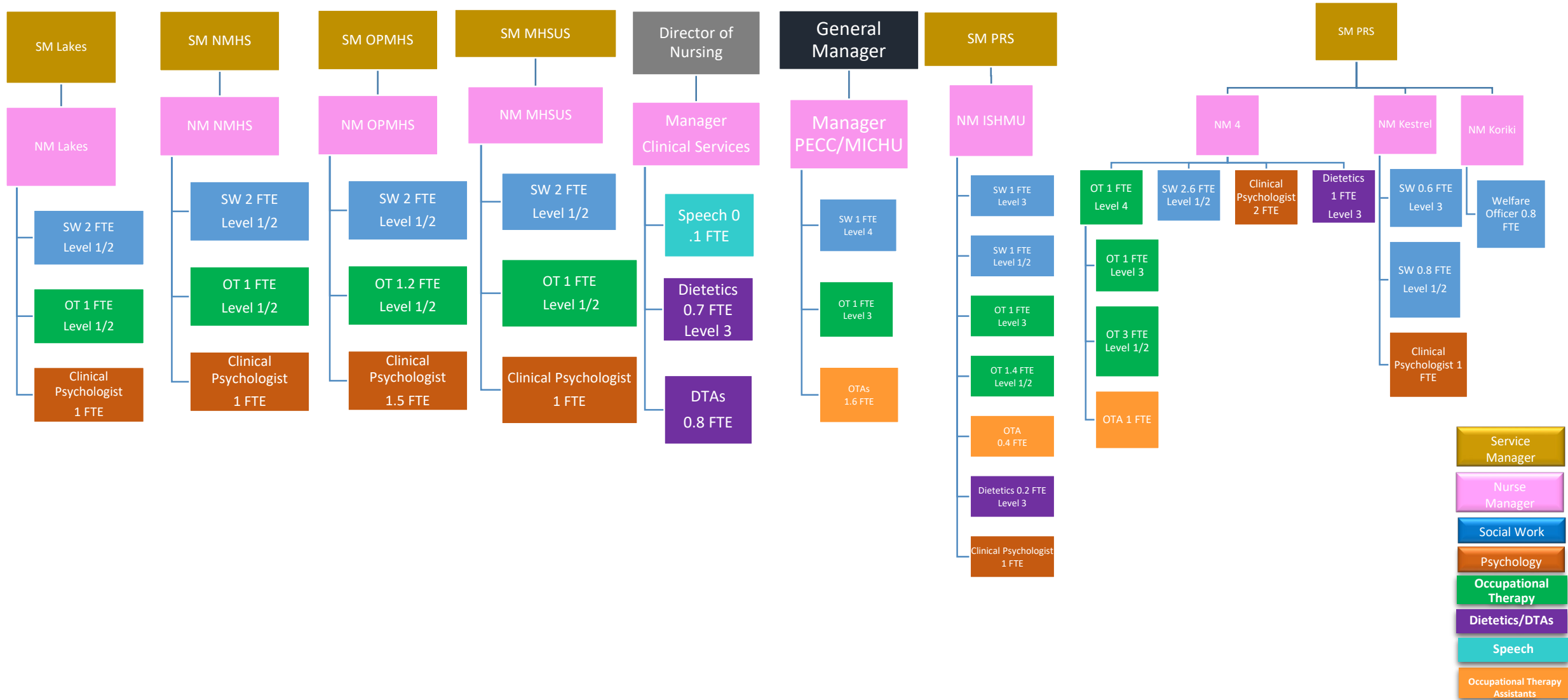


# Current Structure



Legend for Role Types:

- Service Manager (Yellow)
- Nurse Manager (Pink)
- Social Work (Blue)
- Psychology (Orange)
- Occupational Therapy (Green)
- Dietetics/DTAs (Purple)
- Speech (Cyan)
- Occupational Therapy Assistants (Light Orange)

# Proposed Allied Health MHC Structure

