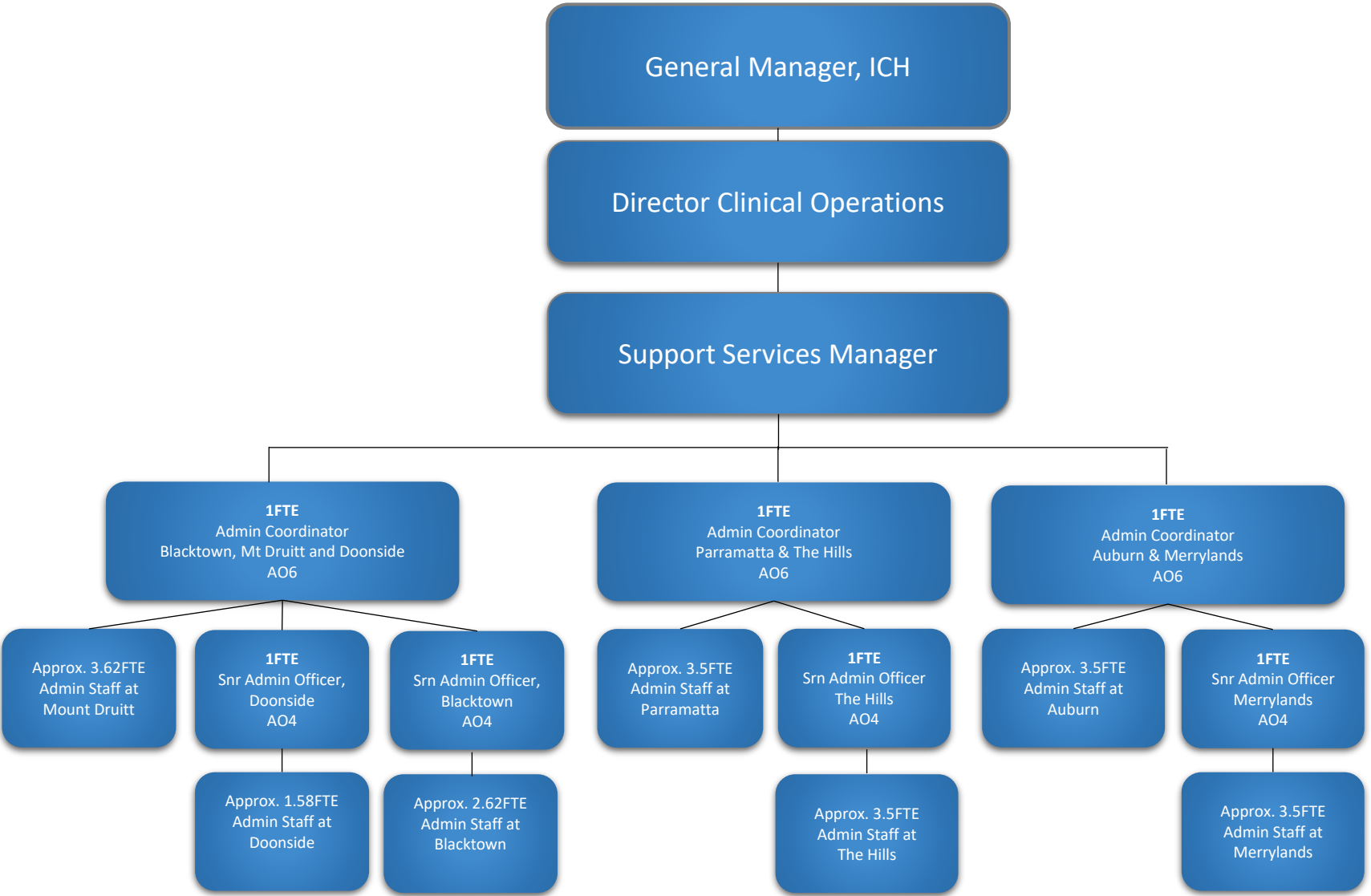


Current Reporting Structure Community Health Centre Support Management



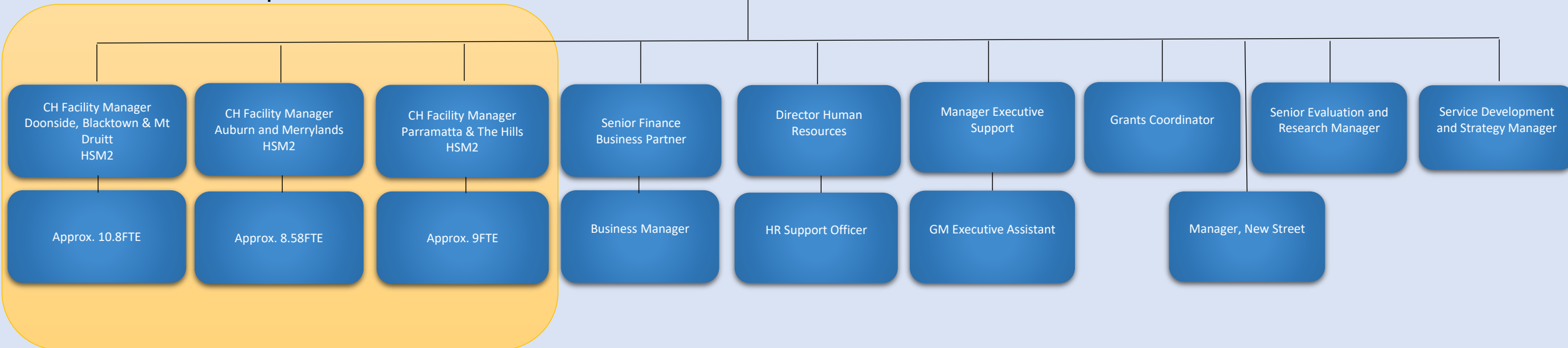
Proposed Reporting Structure

Director Corporate Operations, Integrated Community Health

Proposed changes:

- Community Health Centre Support Services to move from under Director Clinical Operations to Director Corporate Operations
- Create two additional Health Service Manager 2 Community Health Facility Managers.
- All three (3) Community Health Facility Managers to report to the Director Corporate Operations.
- All Community Health Facility Managers will have managerial responsibility of all administration staff within their respective centres

Proposed

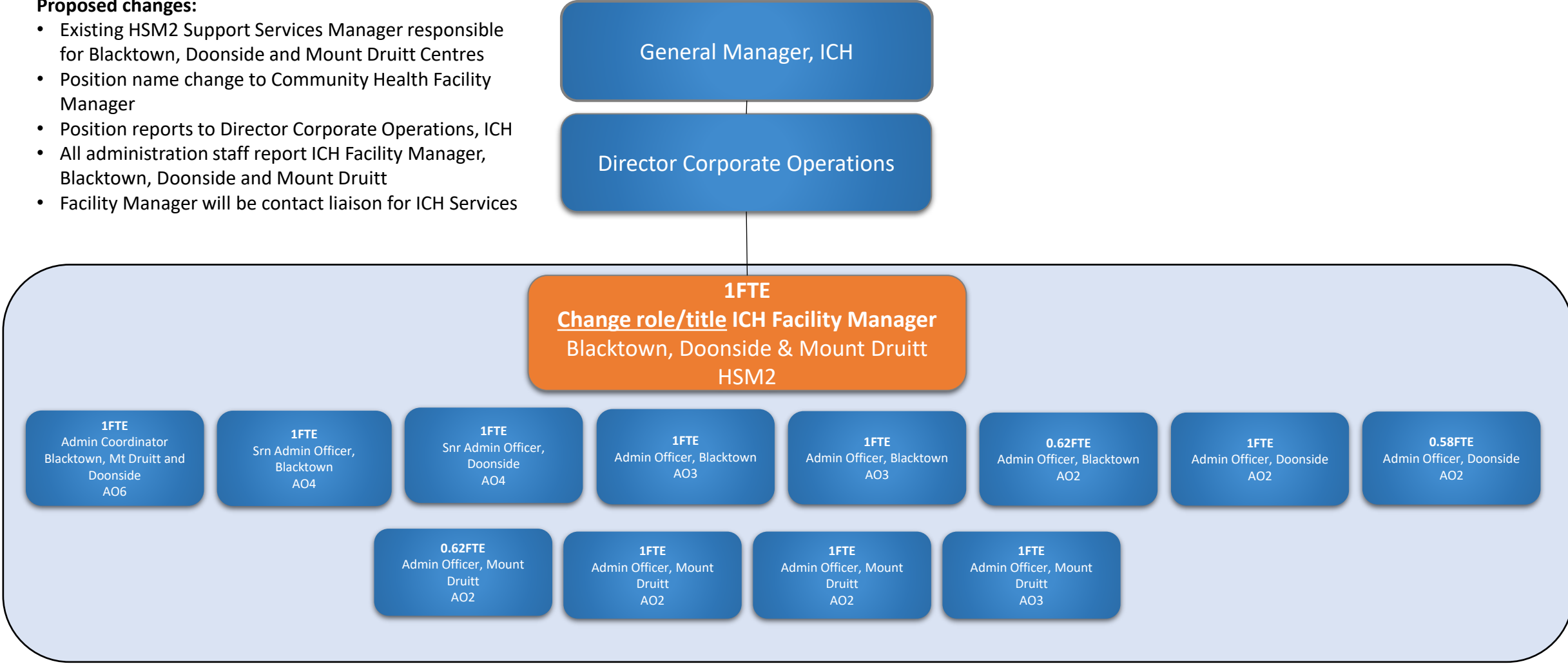


Proposed Reporting Structure

Blacktown, Doonside and Mount Druitt Community Health Centres

Proposed changes:

- Existing HSM2 Support Services Manager responsible for Blacktown, Doonside and Mount Druitt Centres
- Position name change to Community Health Facility Manager
- Position reports to Director Corporate Operations, ICH
- All administration staff report ICH Facility Manager, Blacktown, Doonside and Mount Druitt
- Facility Manager will be contact liaison for ICH Services



Proposed Reporting Structure Auburn and Merrylands Community Health Centres

Proposed changes:

- Additional HSM2 ICH Facility Manager, Auburn and Merrylands appointed
- New HSM2 ICH Facility Manager reports to Director Corporate Operations, ICH
- All administration staff report to new HSM2 ICH Facility Manager, Auburn and Merrylands

General Manager, ICH

Director Corporate Operations

NEW ICH Facility Manager
Auburn and Merrylands
Community Health Centres

1FTE
Admin Coordinator
Auburn & Merrylands
AO6

1FTE
Snr Admin Officer
Merrylands
AO4

0.5FTE
Hospital Assistant
Merrylands
Grade 2

1FTE
Administration Officer
Merrylands
AO3

1FTE
Administration Officer
Merrylands
AO3

1FTE
Administration Officer
Merrylands
AO3

0.58FTE
Administration Officer
Auburn
AO3

1FTE
Administration Officer
Auburn
AO2

1FTE
Administration Officer
Auburn
AO3

1FTE
Administration Officer
Auburn
AO3

Proposed Reporting Structure Parramatta and The Hills Community Health Centres

Proposed changes:

- Additional HSM2 ICH Facility Manager, Parramatta and The Hills appointed
- New HSM2 ICH Facility Manager reports to Director Corporate Operations, ICH
- All administration staff report to new HSM2 ICH Facility Manager, Parramatta and The Hills

