

## **NBMLHD Mental Health Updated Reporting Lines**

Dear Member,

At a recent Staff Consultative Committee meeting, Nepean Blue Mountains Mental Health management advised that they are proposing to amend reporting lines. This includes changes to the reporting lines for the Mental Health Information System Team and Triage and Assessment Centre. Management claim these changes will provide more functional relationships within the service and will take effect from 1 January 2019.

Attached is the proposed updated organisational structure.

If you have any comments or concerns regarding these changes, please contact Joshua Howarth via [joshua.howarth@hsu.asn.au](mailto:joshua.howarth@hsu.asn.au) by close of business Friday 28 December 2018.

If you have any colleagues who are not yet members of the HSU, encourage them to join and have a say in their conditions at work. They can join by visiting [www.hsu.asn.au/join](http://www.hsu.asn.au/join) or by calling the union on 1300 478 679. We are stronger together.

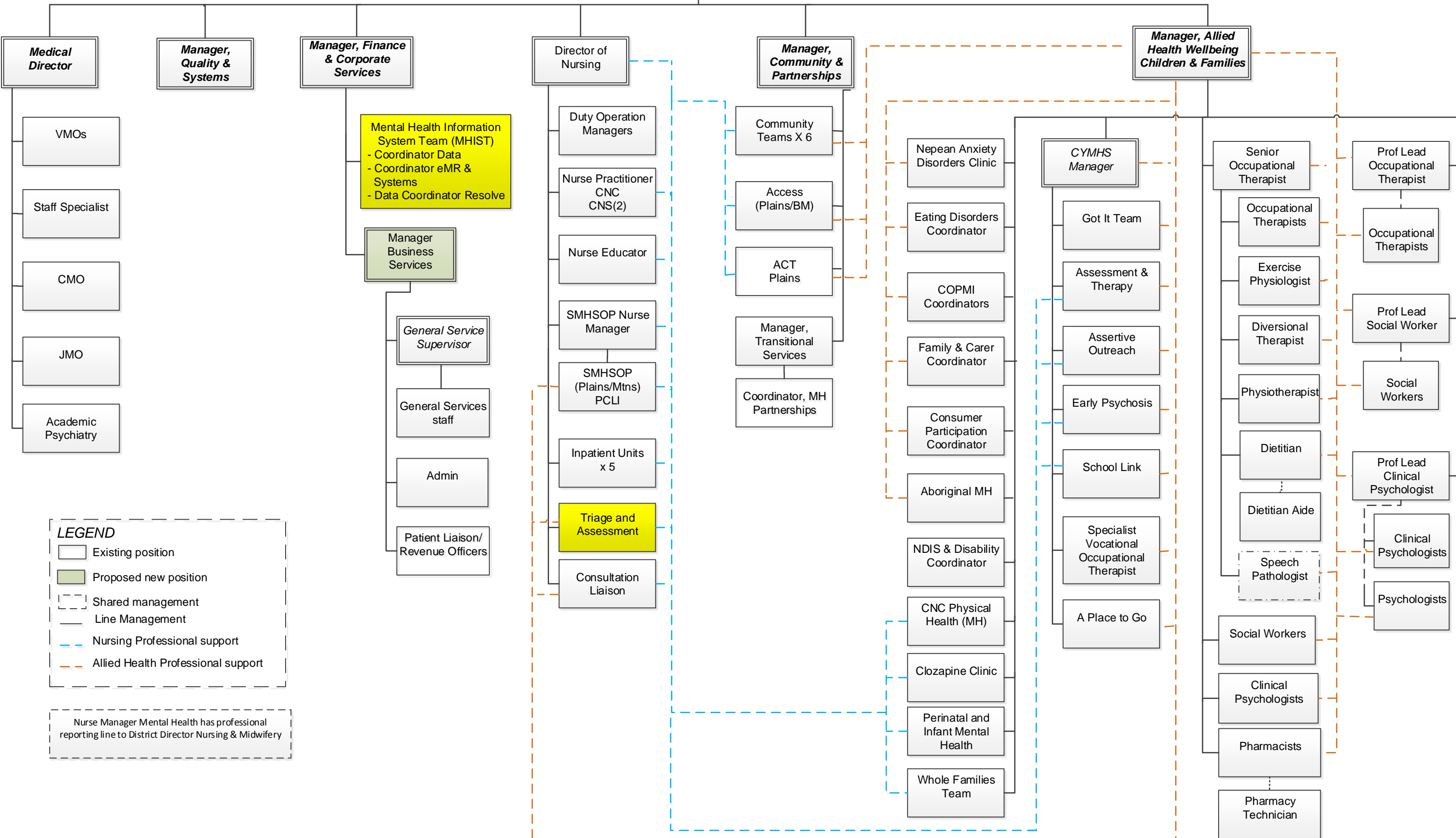
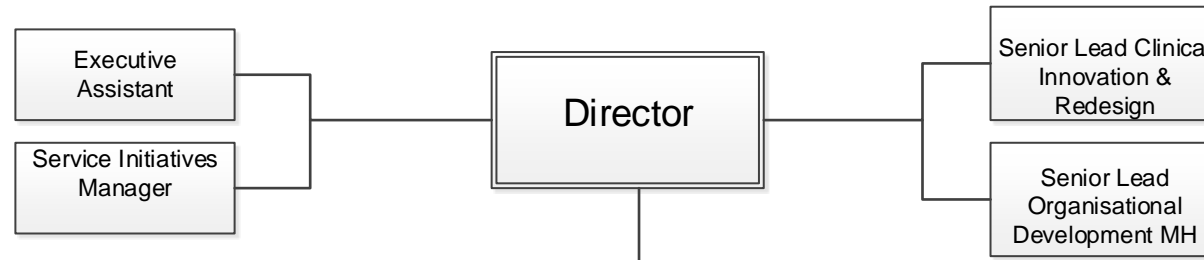
In unity,



Gerard Hayes  
Secretary, HSU NSW/ACT/QLD

# Mental Health Structure

As at September 2018



**LEGEND**

- Existing position
- Proposed new position
- Shared management
- Line Management
- Nursing Professional support
- Allied Health Professional support

Nurse Manager Mental Health has professional reporting line to District Director Nursing & Midwifery