

WSLHD proposed changes to leadership structures

Dear Member,

Attached is correspondence the HSU has received from Western Sydney Local Health District regarding proposed changes to leadership structures within the District.

Member feedback requested

The HSU industrial team is currently reviewing the potential impacts of the proposed restructure upon affected employees. We are now seeking feedback, views and comments from our members.

Please review the attached documentation and provide comment and feedback by 10 February 2020. You can submit it by email to greg.odonohue@hsu.asn.au with subject line *WSLHD Leadership Structures*.

HSU organiser and sub-branch involvement

Your HSU organiser will be visiting your workplace shortly and convening a meeting to discuss the matter with affected employees. The HSU is also seeking expressions of interest from members to be part of the consultative process as a workplace delegate in any upcoming USCC meetings regarding this proposal. The most effective way to deal with these kinds of proposals is by taking into account the concerns of the group, agreeing on a way forward and presenting that united position to management.

Please distribute this newsletter to your work colleagues for their information and comments and encourage them to attend the meeting.

Not a member of the HSU? Now is time to join and have your say! You can join online at www.hsu.asn.au/join or call 1300 HSU NSW and join over the phone.

A union's effectiveness and negotiation power depends upon the strength and density of its membership base. Join your work colleagues today by becoming a member of the Health Services Union and help us continue to protect and improve your working life.

In unity,



Gerard Hayes
Secretary, HSU NSW/ACT/QLD



Health
Western Sydney
Local Health District

WSLHD Ref: 20/9138

Mr Gerard Hayes
Secretary
Health Services Union NSW/ACT
Level 2, 109 Pitt St
SYDNEY NSW 2000

Via email: secretary@hsu.asn.au

Dear Mr Hayes

I write to inform you that as advised in the meeting held with Western Sydney Local Health District (WSLHD) on 24 May 2019, we are proceeding with our intention to make changes to the leadership structures for Westmead Hospital, Blacktown and Mount Druitt Hospital, Auburn Hospital, Drug Health Services, Oral Health Services, and the clinical networks.

Over the past 6 months, five facility and service consultation groups, and a clinical consultation group have reviewed and discussed options to improve our governance. We now have proposed structures and will be sending these out to all staff for consultation over the next two weeks. The proposed structures are attached.

Under the proposed leadership structures, the General Managers and Service Directors would continue to lead the operational management and delivery of healthcare within our facilities and services. The proposed clinical networks would provide strategic clinical leadership at the District level.

If you wish to obtain further information, please contact Dominika Nambier, on Tel: (02) 8838 6211 or Email: Dominika.nambier@health.nsw.gov.au

Yours sincerely

Graeme Loy
Chief Executive

Date: 31-1-20

Cc: Mr Brendan Roberts, Organiser, HSU

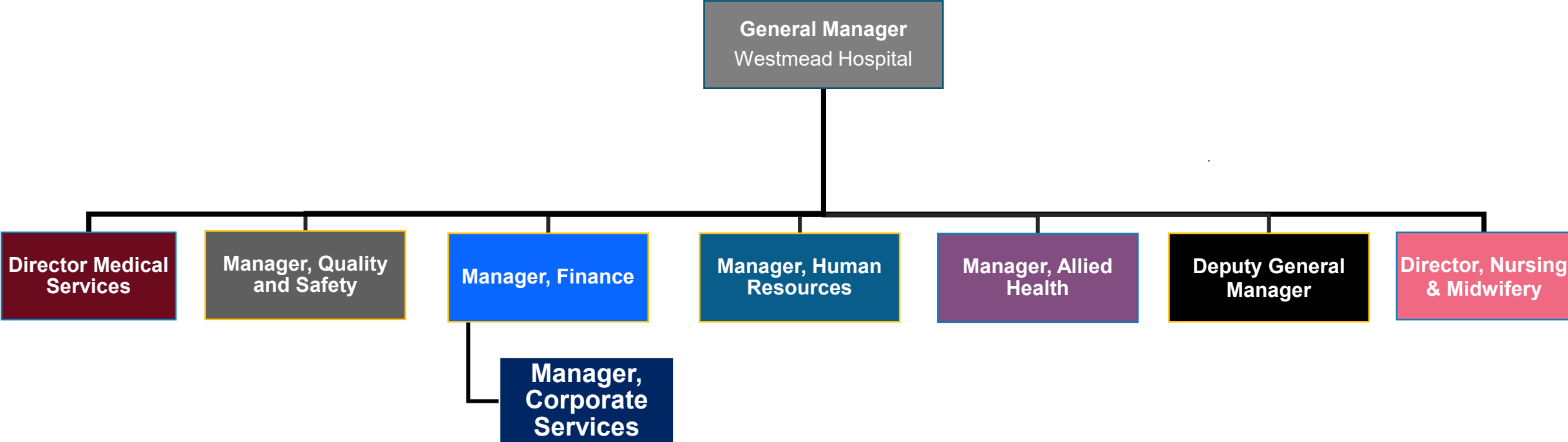
Attached: Proposed Leadership Structures - WSLHD

PROPOSED FACILITY AND SERVICE STRUCTURES

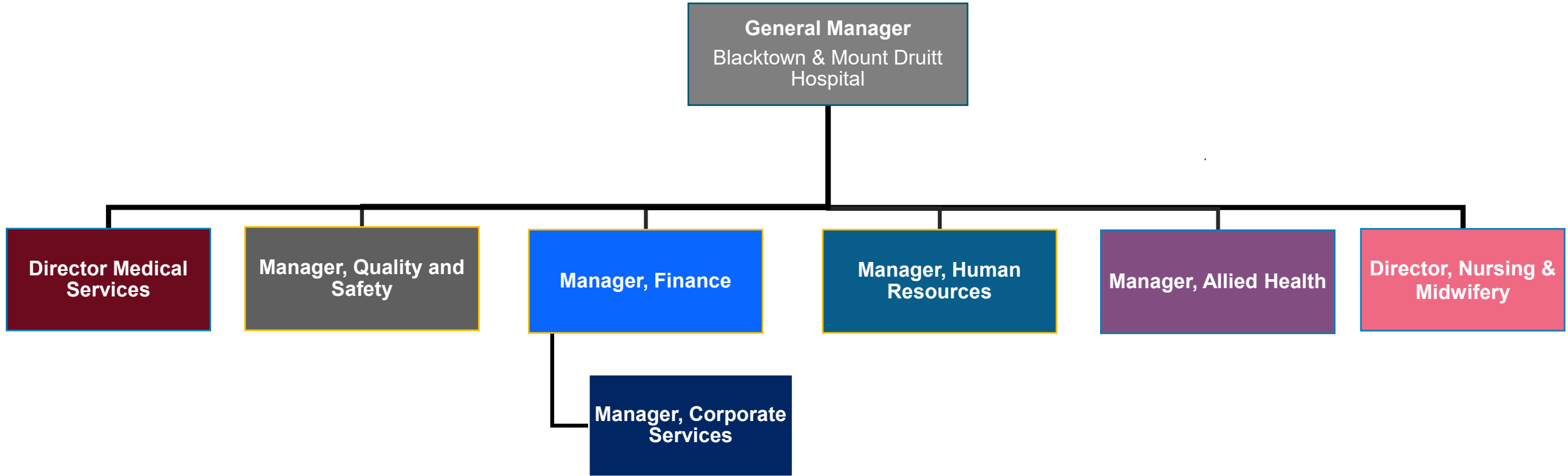


Health

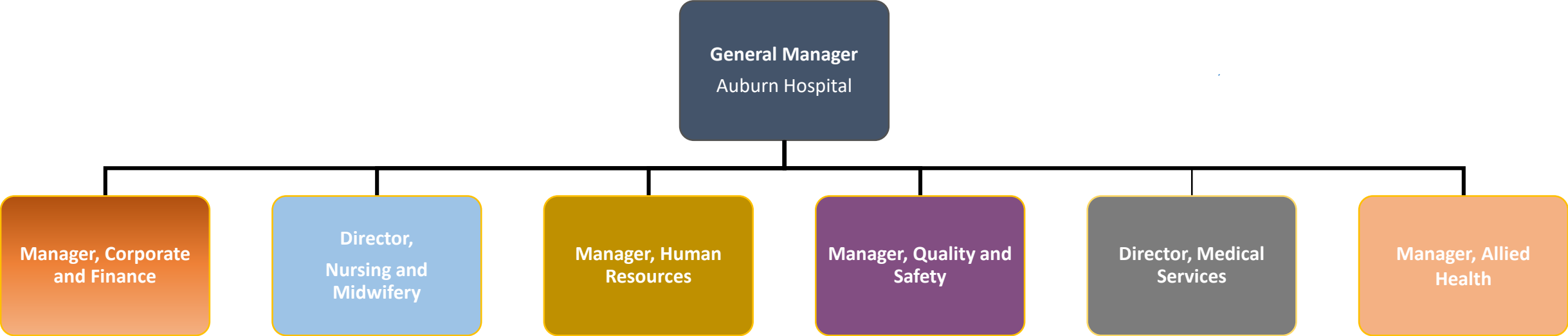
Proposed Westmead Hospital Leadership Structure



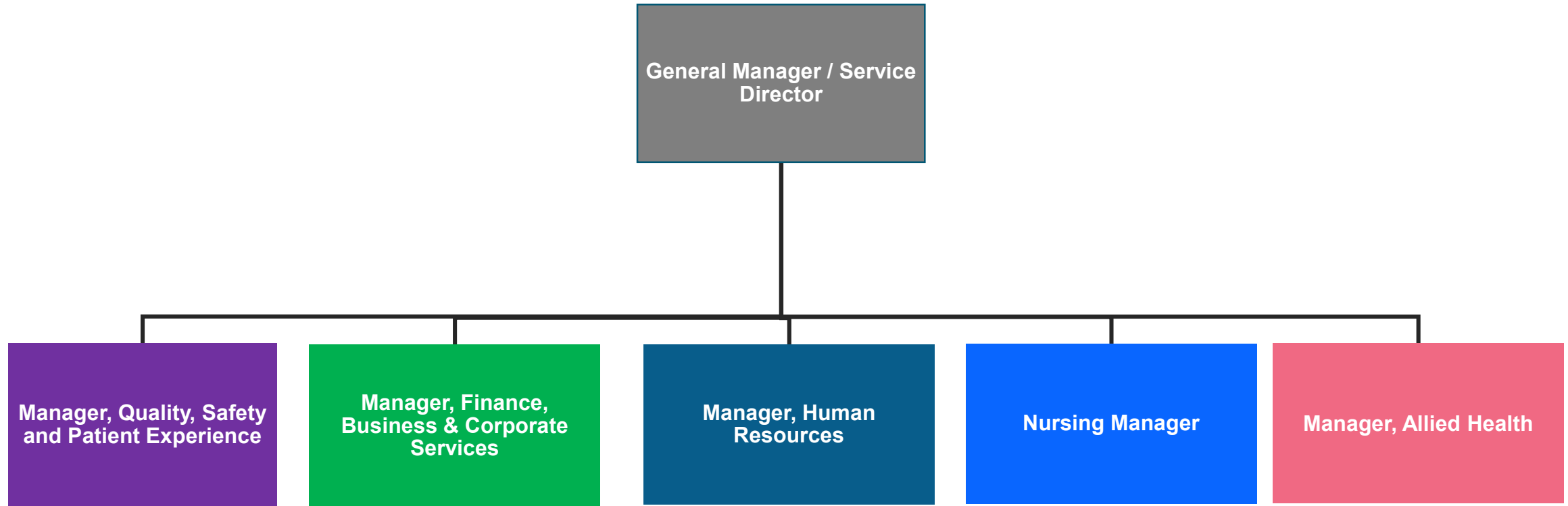
Proposed Blacktown and Mount Druiitt Hospital Leadership Structure



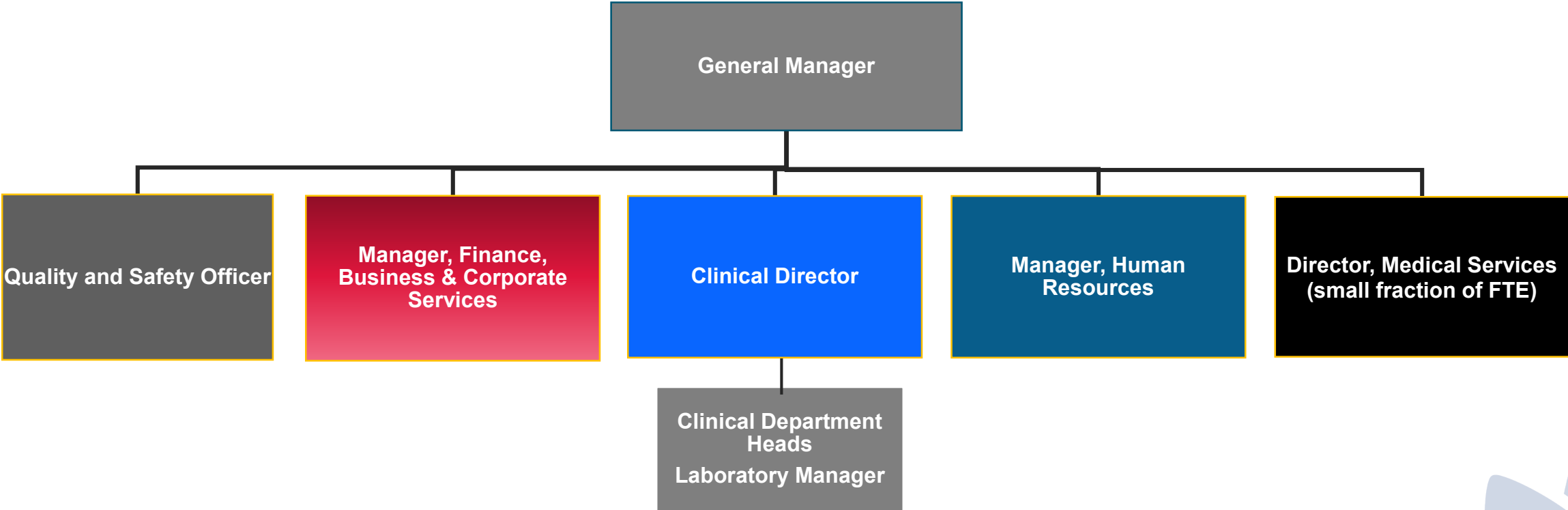
Proposed Auburn Hospital Leadership Structure



Proposed Drug Health Services Leadership Structure



Proposed Oral Health Services Leadership Structure



PROPOSED CLINICAL NETWORKS



Health

Clinical Networks - Proposed Option 1

SURGERY	SURGERY SPECIALTIES	SUB-ACUTE & AMBULATORY MEDICINE	SPECIALTY MEDICINE	CANCER SERVICES	DIAGNOSTICS AND PROCEDURES	WOMEN'S HEALTH	PAEDIATRICS	CRITICAL CARE
General Surgery	Ophthalmology ENT	Rehabilitation	Cardiology	Breast Cancer Institute	Imaging	Maternity Care	Neonatology	Emergency Medicine
Metabolic Surgery	Surgery	Geriatrics	Gastroenterology	Breast Surgery	Nuclear Medicine	Women's Health Clinic	State-wide Infant Screening Hearing	Intensive Care
Upper GI Surgery	Neurosurgery	Psych-Geriatrics	Endoscopy	Haematology/Bone Marrow Transplant	Interventional Radiology	Maternal Foetal Medicine	Acute Paediatrics	Pain Management Service
Colorectal Surgery	Interventional Neuroradiology	Hospital in the Home (HITH)	Respiratory/Sleep Medicine	Medical Oncology		Reproductive Medicine	Community Paediatrics	Toxicology
Transplant Surgery	Cardiothoracic Surgery	Brain Injury Unit	Neurology	Radiology Oncology Network		Gynaecological Oncology	Adolescent Health	Trauma
Urology	Vascular Surgery	Endocrinology	Clinical Pharmacology	Palliative/Supportive Care		Obstetrics	Paediatric Surgery	Forensic Medical Unit
Surgical Oncology	Hand Surgery	Infectious Disease/Sexual Health				Uro- Gynaecology		Anaesthetics
Head/Neck	Orthopaedic Surgery	Infection Prevention						
Oral/Maxillofacial Surgery	Plastic Surgery	General Medicine						
		Immunology/Allergy						
		Western Renal Service						
		Transplant Service						
		Dermatology						
		Clinical Genetics						

Clinical Networks - Proposed Option 2

CARDIOVASCULAR, THORACIC & NEUROLOGY	SURGERY	AGED CARE & GENERAL MEDICINE	SUB-ACUTE & AMBULATORY MEDICINE	GASTROINTESTINAL SPECIALTIES	CANCER SERVICES	DIAGNOSTICS AND PROCEDURES	WOMEN'S HEALTH	PAEDIATRICS	CRITICAL CARE
Cardiothoracic surgery	General Surgery	General Medicine	Rehabilitation Brain	Metabolic Surgery Upper	Breast Cancer Institute	Imaging	Maternity Care	Neonatology	Emergency Medicine
Vascular Surgery	Ophthalmology ENT	Geriatrics	Injury Unit	GI Surgery	Breast Surgery	Nuclear Medicine	Women's Health Clinic	State-wide Infant	Intensive Care
Cardiology	Surgery Plastic	Psych-Geriatrics	Endocrinology	Gastroenterology	Haematology/Bone Marrow Transplant	Interventional Radiology	Maternal Foetal Medicine	Screening Hearing	Pain Management Service
Respiratory/ Sleep Medicine	Surgery Hand Surgery	Geriatrics	Rheumatology	Endoscopy Colorectal Surgery	Medical Oncology		Reproductive Medicine	Acute Paediatrics	Community Paediatrics
Neurosurgery	Surgical Oncology	Hospital in the Home (HITH)	Infectious Disease/Sexual Health	Clinical Pharmacology	Radiology Oncology Network		Gynaecological Oncology	Adolescent Health	Toxicology
Interventional Neuroradiology	Head /Neck		Infection Prevention		Palliative /Supportive Care		Obstetrics	Paediatric Surgery	Trauma
Neurology	Orthopaedic Surgery		Immunology/ Allergy				Uro- Gynaecology		Forensic Medical Unit
	Transplant Surgery		Western Renal Service						Anaesthetics
	Urology		Transplant Service						
	Oral/Maxillofacial Surgery		Dermatology						
			Clinical Genetics						